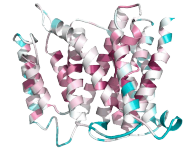


DMEM Media Production



DMEM High Glucose

DMEM High Glucose is prepared from a powder media preparation.

- DMEM is from Sigma Catalog Number D5648
 - Contains 4.5 g/liter glucose and 0.584 g/liter L-glutamine.
 - Location: Small Brown Bottles in Refrigerator
- Fetal Bovine Serum from Atlanta Biologicals Catalog Number S11050
 - Location: Freezer or -80 freezer
- Penicillin / Streptomycin from ATCC Catalog Number 30-2300 it is at 100X
 - Stock Concentration is 10,000 IU Penicillin and 10,000 µg/ml Streptomycin
 - Location: Freezer
- G418 is from MP Biomedicals Catalog Number 1672548
 - 50 mg/ml solution
 - culture hood

DMEM Base Media Preparation (1 liter)

1. Empty 1 bottle of DMEM powder into approximately 500 ml Millipore water.
 - a. Rinse bottle with Millipore water into the solution
2. Add 2.1 g NaHCO₃ (Sodium Bicarbonate)
3. pH to 7.2
4. Q.S. volume to 1 liter using Millipore water.
5. If storing media at this point, filter sterilize and label as DMEM Base

DMEM 10% FBS with Pen/Strep (500 ml)

1. 445 ml DMEM Base
2. 50 ml FBS
3. 5 ml Pen/Strep Stock (100X; 10,000 IU Penicillin and 10,000 µg/ml Streptomycin)
4. Filter Sterilize
5. Aliquot into 100 ml bottles (Never leave in 500 or 1000 ml bottles)

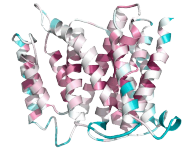
DMEM 0.5% FBS with Pen/Strep (500 ml)

1. 492.5 ml DMEM Base
2. 2.5 ml FBS
3. 5 ml Stock Pen/Strep (100X; 10,000 IU Penicillin and 10,000 µg/ml Streptomycin)
4. Filter Sterilize
5. Aliquot into 100 ml bottles (Never leave in 500 or 1000 ml bottles)
 - a. Aliquot using 25 or 50 ml serological pipettes in culture hood

DMEM Complete Selection Media (50 ml)

1. 45 ml DMEM Base
2. 5 ml FBS
3. 1 ml of G418 Stock Concentration 50 mg/ml, final conc 1 mg/ml
4. Filter Sterilize
5. DMEM 10% FBS G418 Selection

DMEM Media Production



DMEM 10% FBS G418 Maintenance Media (500 ml)

1. 447.5 ml DMEM Base
2. 50 ml FBS
3. 2.5 ml of G418 Stock (Concentration 50 mg/ml) final conc 0.25 mg/ml G418
4. Filter Sterilize
6. Aliquot into 100 ml bottles (Never leave in 500 or 1000 ml bottles)
 - a. Aliquot using 25 or 50 ml serological pipettes in culture hood
5. Label

DMEM Complete Primocin Media (500 ml)

1. 500 ml DMEM Base
2. 50 ml FBS
 - a. 1 ml Primocin Stock (Concentration 50 mg/ml) final conc 0.1 mg/ml Primocin
3. Filter Sterilize
7. Aliquot into 100 ml bottles (Never leave in 500 or 1000 ml bottles)
 - b. Aliquot using 25 or 50 ml serological pipettes in culture hood
6. Label